

# Trail Connections

Spring/Summer 2012

The Quarterly Newsletter Published by the Linn County Trails Association



## President's Message:

### ***Safety***

There have been a few reported accidents and near misses on the trails this year. By maintaining proper trail etiquette, we can set the standard for others to follow.

Whether walking, running, biking, or rollerblading always travel on the right side of the trail and move off of the trail when stopping. If you are traveling with a group, please keep the entire group on the right half of the trail. This keeps the trail open for everyone and should minimize collisions and near misses. Always call out when passing someone; in fact it would be good gesture to give a friendly "Hello" to everyone you meet. Maintain a safe and reasonable speed at all times, slow down in congested areas and when passing. If necessary, wait to assure adequate room to pass. When a group passes someone, each person in the group must make sure that the trail is clear before passing. Encountering horses on Sac and Fox Trail requires special treatment because they can be easily spooked. Always yield to horses or make your presence know if you need to pass.

### ***Trail Priorities***

We have a very long wish list of trail projects and the future looks bright for more trail development. How do we decide what are the most important trail projects? Some projects involve painting lines on the street while other projects may require extensive grading for a separated trail. Frequently there are land acquisition issues involved and require a long lead time to complete. In all cases there is a necessary design phase and approval process if taxpayer money is involved. All of which means we must get our priorities right the first time.

Trail priority defines the importance of a trail to the overall Metro/Linn County trail system. It does not necessarily establish the order in which trails are developed. Schedule depends on land availability, funding availability, and schedule of supporting projects that can piggyback the trail project to reduce cost. A trail may have a high priority to protect right-of-way from development that will block the trail, fill in gaps in the existing trail system, develop feeder routes, or identify new primary routes.

The LCTA mission to be a catalyst for the development and growth of a system of connected, multi-use trails throughout Linn County and Eastern Iowa (trails that go somewhere). Therefore the LCTA priority list will focus on connections and major loops. Connections have identified destinations. Destinations include cities, parks, or other primary trails. Many of these connections already partially exist with gaps that need to be filled.

Within the next month, LCTA will be seeking your help identifying the important connections and ranking them in order of importance. Keep in mind that we must serve the entire Metro Area and County and so it is important to identify underserved destinations. We will communicate via the LCTA email distribution and conduct the survey via the internet. If you do not now receive the LCTA email notices, please go to <http://linncountytrails.org> and subscribe at the bottom of the home page so you will be able to participate.

Happy Trails,

*John Wauer*

## **LCTA Officers**

### **President**

John Wauer

### **Vice President**

Steve Hershner

### **Treasurer**

Keith Sutherland

### **Secretary**

Brad Mullin

### **Past President**

Geoff Eastburn

### **Board Members**

Sarah Barber

Michelle Barker

Dean Barnum

Jon Bogert

Dick Chelikowsky

Joe Clark

Nancy Craig

Vicky Evans

Leland Frie

John Goodlove

Jim Healy

Pat Healy

Mike Heffern

Ed Holstrom

Jeff Keiser

Cliff Koop

Kari Lammer

Ron McGraw

Dick Mundy

Tom Peffer

Eric Penne

Kirschen Seah

Don Thomas

Mike Wilson

Dick Woodward

### **Advisory Board**

Dan Biechler

(Linn County Conservation)

Randy Burke

(Linn County Conservation)

Dennis Goemaat

(Linn County Conservation)

Ron Griffith

(City of Cedar Rapids)

Kesha Billings

(City of Marion)

Daniel Gibbins

(Cedar Rapids Parks and Recreation  
Department)

Adam Lindenlaub

(Corridor MPO)

Tom Neenan

(Iowa Trails Council)



## **Upcoming Events**

### **LCTA Board Meeting**

Monday, August 13, 7:00pm

Location: United Way of East Central Iowa

317 7th Avenue SE,

Cedar Rapids

### **LCTA Board Meeting**

Monday, September 10, 7:00pm

Location: United Way of East Central Iowa

Cedar Rapids, IA

### **LCTA Board Meeting**

Monday, October 8, 7:00pm

Location: United Way of East Central Iowa

317 7th Avenue SE,

Cedar Rapids

*All meetings are open to the public.*

Sign up to receive recent updates on trail news and events,  
visit the Linn County Trails Association's website at

***[www.linncountytrails.org](http://www.linncountytrails.org)***



**Find LCTA on facebook @**

***[www.facebook.com/lctrails](http://www.facebook.com/lctrails)***



**Follow LCTA on Twitter @**

***[www.twitter.com/lctrails](http://www.twitter.com/lctrails)***

*Trail Connections is the quarterly publication of the  
Linn County Trails Association.*

*It is published January, April, July and October  
Articles may be submitted as an MS Word or text file.  
Typed, printed or clearly handwritten articles are also ac-  
cepted. Photos can be prints or can be submitted digitally  
and saved with a resolution of ideally 300 dpi and a size  
of 6x8 inches. The deadline for each issue is the first day  
of the month prior to publication. Please send pictures,  
stories, and ideas to Brad Mullin:  
[mullinb1427@yahoo.com](mailto:mullinb1427@yahoo.com)*

# Current Metro Area Trails

## Open For Use

### Summer 2012



Separated Trails	Miles	Surface	Remarks
Bowling Street Trail	1.8	Asphalt	From 50th Street SW to Wilson Avenue
Boyson Trail	2.4	Crushed Limestone	Follows Indian Creek, Marion
Cedar River Trail	13	Asphalt	Cedar Rapids and Hiawatha (ADT)
Cedar Valley Nature Trail	20.5	Asphalt/Crushed Limestone	<b>*Closed from County Home Rd. to Schultz Rd.*</b>
CEMAR Trail	0.6	Asphalt	From 20th to 29th St. NE
CRT Lake Loop	1.6	Asphalt	Around Cedar Lake
Ellis Trail	3	Asphalt/Concrete	From Ellis Park to Downtown
Grant Wood Trail	8.5	Natural	Through Eastern Linn County in 3 segments
Hoover Nature Trail	2.7	Asphalt	76th Ave. SW to Ely Park (ADT)
Kirkwood Connector Trail	1.2	Concrete	From Ely Rd. to Kirkwood Campus
Lindale Trail	1	Crushed Limestone	From Lindale Dr. West to Marion City Limits
Robins Trail	0.7	Asphalt	Along Main St, Robins. Connects to CVNT
Sac and Fox Trail	7.1	Crushed Limestone	<b>*Closed from Rosedale Rd. to Mt.Vernon Rd.*</b>
Park Trails	Miles	Surface	Remarks
Beverly Park Trail System	5	Natural	SW CR: Singletrack Mountain Bike trails
Cedar Greenbelt Trail	4.7	Natural	Near Indian Creek Nature Center/Sac and Fox Trail
Cherokee Park Trail	1	Crushed Limestone	West Side: Edgewood to Wiley Blvd.
Cherry Hill Park Trail	0.8	Crushed Limestone	NW Cedar Rapids: Cherry Hill Park
Fay Clark Memorial Trail	0.7	Asphalt	Hiawatha: Fay Clark Memorial Park
Fross Park	1.2	Crushed Limestone	NW Center Point
Huston Park Trail	0.11	Asphalt	SE Cedar Rapids
Jackson Park Trail	0.4	Crushed Limestone	NW Cedar Rapids near Jackson Elementary School
Lowe Park Trail	0.5	Asphalt	Marion: N. 10th St to 35th Ave
Matsell Bridge Natural Area Trail System	8.4	Natural	NE Linn County, near Viola
Morgan Creek Trail System	3.8	Natural	NW Cedar Rapids
Nixon Trail	0.75	Crushed Limestone	NE Cedar Rapids: Around Nixon School
Noelridge Park Trail	0.8	Crushed Limestone	NE Cedar Rapids: Noelridge Park
Pinicon Ridge Park Trail System	12	Natural	Five park trails near Central City
Prairie Park Fishery Trail	2	Asphalt	SE Cedar Rapids: Prairie Park Fishery
Reed Park Trail	0.25	Crushed Limestone	SW Cedar Rapids near Taylor Elementary School
Squaw Creek Park Trail System	4	Natural	Located within Squaw Creek Park plus 1 mile singletrack mountain bike trail
Thomas Park Singletrack	2	Natural	Singletrack mountain bike trail
Van Buren Park Trail	0.5	Crushed Limestone	SW Cedar Rapids near Van Buren Elementary School
Wickiup Hill Outdoor Learning Center Trail System	5	Natural	5 mile network near Toddville

ADT=American Discovery Trail, NRT= National Recreational Trail



---

## ***Making Trails Happen: The Lindale Trail***

---

**W**hen complete, the Lindale Trail will serve as an important connection between Marion and Cedar Rapids. The alignment of the trail follows the former Illinois Central Gulf Railroad right-of-way.

The Marion constructed its section of the Lindale Trail in 2010-11. In April 2010, the city of Marion received two grants, a Rockwell Green Communities and a Iowa Great Places grant, for the construction on a .5 mile of trail west of Lindale Drive. In June 2012, the city of Marion constructed the railroad right-of-way west of Lindale Dr. and connected it with the existing Boyson Trail. The development of the former Illinois Central Gulf Railroad corridor is a key component of the Marion's Central Corridor Plan. With construction of the new 6th Avenue, new trails and bike lanes will connect the west and east side of the city.

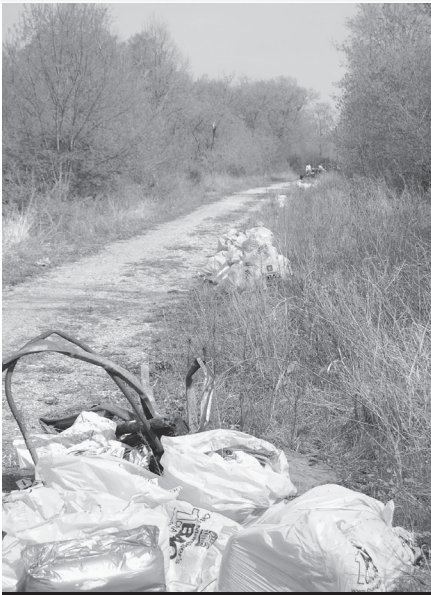


In March 2012, the LCTA purchased 6.47 acres of property north of Blairs Ferry Road in Cedar Rapids for \$25,000. The land consisted a portion of former Illinois Central Gulf Railroad right-of-way. LCTA organized a clean-up of the property on March 31st. Over 30 volunteers, equipped with gloves and Mayors' One Bag Challenge trash bags, accumulated three truckloads of garbage. On April 24, the LCTA gifted the property to the city of Cedar Rapids. The purchased section resulted in .5 mile of new trail in Cedar Rapids. LCTA is working with the city of Cedar Rapids on paving the newly acquired portion. In June 2012, the Rockwell Collins Charitable Corporation donated \$15,000 to the paving project. LCTA has agreed to assist the City of Cedar Rapids with another \$14,000 for the paving.

Trail users asked to park in Thomas Park and ride/walk to the Lindale Trail using the Boyson Trail. Please refrain from using the parking lots located off C Ave. N. E. in Cedar Rapids as the city is working to obtain easements for trail access.





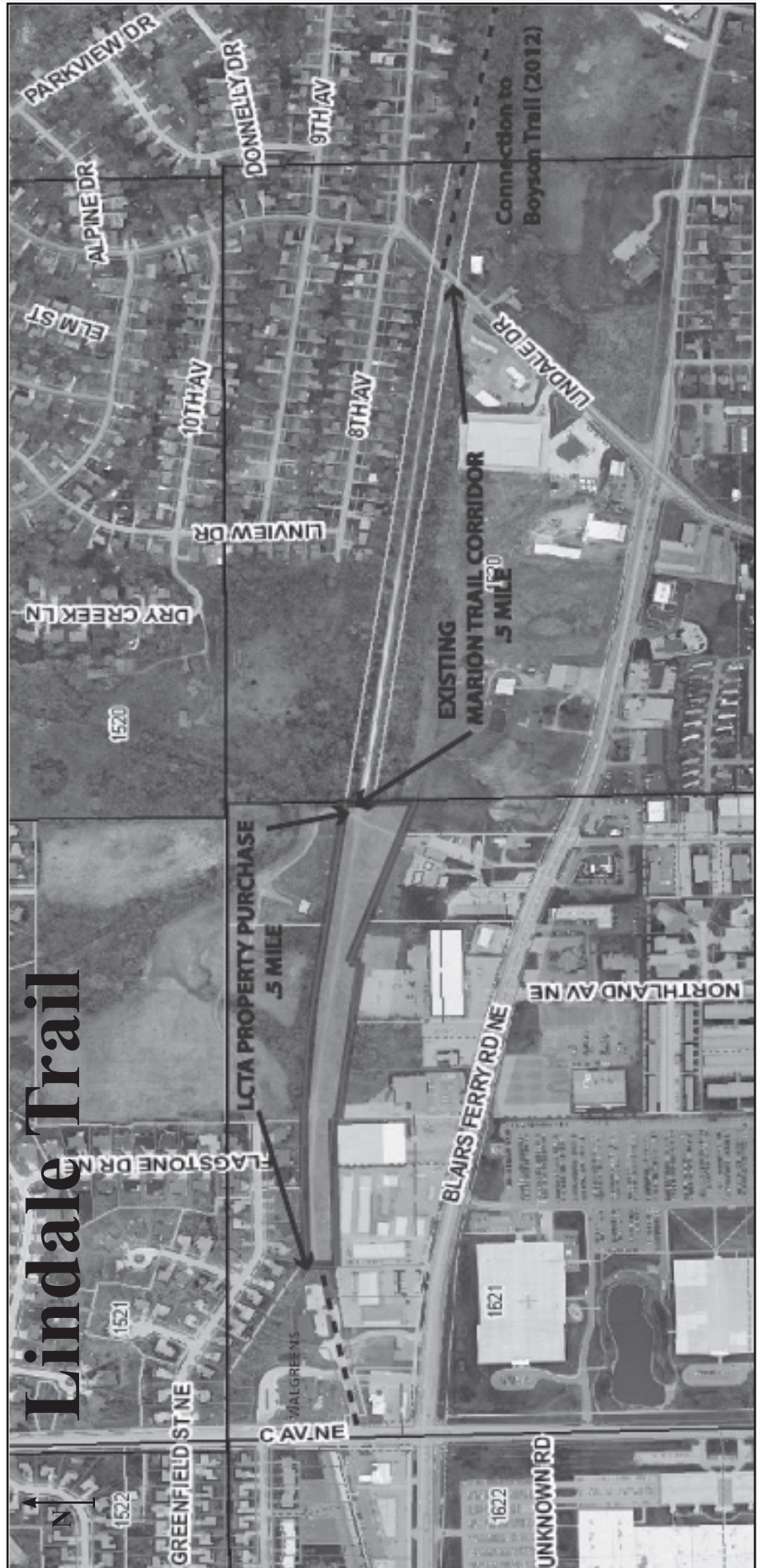


*Cedar Rapids section of the Lindale Trail*

### Clean-up Volunteers

Sarah Barber  
 Dean Barnum  
 Nancy Craig  
 Vicky Evans  
 Steve Hershner  
 Jeff Keiser  
 Ron McGraw  
 Dick Mundy  
 Brad Mullin  
 Tom Pepper  
 Carol Reasnor  
 Eric Penne  
 Kirschen Seah  
 John Wauer  
 Mike Wilson  
 Esther Wilson  
 Bob Ward  
 Nathan Ward  
 James Ocasio  
 Diane Ocasio  
 Erenute Nicola  
 Roger Heidt  
 John Reddersen  
 Josh Reddersen  
 Glen Schwartz  
 Brian Keller  
 Tammy Keller  
 Joe Wells  
 Fran Wells  
 Richard Bradford  
 Terri Thayer

# Lindale Trail





---

## ***Cedar Valley Nature Trail Update***

### ***CVNT: Paving Progress***

**T**he Cedar Valley Nature Trail, north of County Home Rd., closed for paving on March 19, 2012. The new section of paved trail will feature a new concrete culvert under Lafayette Rd., sections of porous concrete, concrete bridge decks and better drainage. Unusual dry conditions have allowed for the contractor to finish work in a timely manner. The contractor started at Schultz Rd. and began paving south in early May. By the end of May, the trail had been paved to Lafayette.

At Lafayette, Lafayette Rd. was closed and the old metal culvert was removed and a new boxed concrete culvert was installed. The other metal culvert, just south of Lafayette Rd., was removed entirely and not replaced in agreement with the landowner. At the end of June, paving was complete to the underpass of Midway Rd. The Conservation Department placed concrete decks on the bridges of the newly paved section as well as used porous concrete in two sections to assist in drainage.

Near the end of July, work was completed to County Home Rd. When complete, a little over 10 miles of the CVNT will be paved from the Boyson Rd. trailhead to Schultz Rd. The Conservation Department expects to have the trail open from County Home to Schultz Rd. to users by mid-August. Until then, trail users are asked to obey and respect the posted signs and barricades as work completes.



### ***Benton County Storm Damage Clean-up***

**L**ast summer, several strong storms resulted in damage and debris along the Cedar Valley Nature Trail in Benton County (*see photos*). Approximately, 10 miles of trail was affected by the strong winds. The greatest amount of damage occurred along a 2 mile stretch of trail just north of Urbana (miles 20-23). Numerous downed and uprooted trees restricted trail use. The Linn County Conservation will contract tree and debris removal along the Cedar Valley Nature Trail this fall. The trail will be closed north of Urbana for the clean-up work sometime in September/October 2012





---

## **Cedar Valley Nature Trail Update**

### **Benton County: Bridge Repair**

In 2012, The Linn County Conservation Department will repair two of the three Benton County bridges on the Cedar Valley Nature Trail. Both bridges are located north of Urbana and are over twenty years old. The CVNT bridge over Prairie Creek (mile 23) will have a new concrete deck installed. The other bridge located just south of the Bear Creek (Midpoint) bridge (mile 25) will have 22 new pilings and a new concrete deck.



The longest bridge, over Bear Creek, is not in need of repair. During the initial construction of the Cedar Valley Nature Trail, the Bear Creek Bridge was burned by anti-trail advocates. The bridge was rebuilt and the names of the main contributors of the Cedar Valley Nature Trail creation were inscribed on the center bridge planks. The bridge was the stage of the grand opening celebration of the trail in 1984.



Approximately ten miles of the CVNT is located in Benton County, Linn County Conservation agreed to maintain the trail during its creation. The CVNT is scheduled for closure north of Urbana in late July and early August as the bridges are repaired.



*Photos: Top Right: Bridge south of Bear Creek to be replaced.  
Middle: Light shines through a hole in the Prairie Creek Bridge.  
Bottom: Bear Creek (Midpoint) Bridge.*

### **Black Hawk County:McFarlane Park**

In Black Hawk County, work continues on the rehabilitation of the two Cedar Valley Nature Trail bridges after the flood of 2008. The Evansdale bridge over the Cedar River was open for public use on July 31, 2011. Further south on the trail, the bridge over the Cedar River in McFarlane Park is on its way to being rebuilt. In June 2012, the Black Hawk County Supervisors approved a 2.66 million contract for the construction of the new bridge in McFarlane Park. The previous bridge, built in 1912, was eligible for inclusion on the National Register of Historic Places. Its eligibility, and use of federal funds in its reconstruction, required the Black Hawk Conservation Board to mitigate the loss of the bridge.

Mitigation involved a final review and update of the Iowa Sites and Inventory forms of the bridge. Site inventory forms provide a comprehensive documentation of the historical aspects of a historical structure in the state. The bridge underwent a “controlled demolition” after documentation in May 2012. The information gathered will be published in a pamphlet. In addition, an article will be published on the old bridge. An interpretative panel with the information will be included in the new bridge construction. The Black Hawk County Conservation Board is planning a grand opening of the new McFarlane bridge for July 2013.



# CEMAR TRAIL: *Marion's Krumboltz Trail*

To Thomas Park

Improvements to the Marion trail system in 2012 included the development of its first phase of the CEMAR trail. The CEMAR trail will connect the communities of Marion and Cedar Rapids with an east-west trail. The initial Marion phase, referred to as the Krumboltz Trail, connects the Boyson trail near Thomas Park with a meandering granular surface trail down to US Highway 100. The new .75 mile trail includes a 120 foot bridge over Indian Creek.

Though the trail currently ends at Highway 100, Marion's second phase of the CEMAR will continue along the Indian Creek greenway towards the Cedar Rapids city limits. The second phase requires the City of Marion to acquire property and/or easements for the construction of the trail. Currently, the city of Marion is developing routes to 11th St. to form a loop back to Hanna Park.





# National Trails Day 2012

On Saturday, June 2nd, the Linn County Trails Association, Cedar Rapids Bicycle Advisory Committee and the Linn Area Mountain Biking Association rewarded Cedar Rapids Downtown Farmers Market Bike Corral users with free donated food and beverages. Over 100 cyclists used the corral on the first day of the farmer's market as part of the 2012 American Hiking Society's National Trail Day celebrations.



Since the creation of the American Hiking Society's National Trails Day® in 1993, the program has inspired and engaged thousands of individuals, trail clubs, businesses and government agencies worldwide. The 2012 theme was "America's Largest TRAILgating Party." National Trails Day® encourages the public and trail enthusiasts nationwide to learn about and celebrate trails. It also provides an opportunity to thank volunteers, public agencies and outdoor-minded businesses for their support in developing and maintaining trails.

*Thank you to everyone that participated in this year's event!*

## 2012 NTD Sponsors:

Fareway  
Sykora  
Croissant du Jour  
Quaker Oats  
Wal-Mart  
Target  
Blue Strawberry  
Coffeesmiths  
Hy-Vee  
LAMBA  
Cedar Rapids Bicycle  
Advisory Committee



## 2012 NTD Volunteers

Vicky Evans  
Ron Griffith  
John Wauer  
Mike Wilson  
Dick Mundy  
Dean and Jan Barnum  
Mike and Esther Wilson  
Leland Freie  
Michelle and Ken Barker  
Linn Area Mountain Bike  
Association

## Upcoming Cedar Rapids Downtown Farmer's Markets

August 4th: Bike to the Market Day.

August 18th

September 1st

September 15th



---

## **Lundby Bridge Dedication: August 24th**

The Linn County Conservation Board invites everyone to attend the Mary Lundby Memorial Trail Bridge dedication in Pinicon Ridge Park. The ceremony is scheduled for August 24, 2012 at noon in Pinicon Ridge Park. On May 25, 2012, the 520 bridge across the Wapsipinicon River opened for public use.

The Linn County Conservation is working on the construction of a plaza to serve as a gateway to the bridge as well as components of the park trail system on both sides of the river. In the summer of 2012, a trail connecting the north side of Pinicon Ridge Park to Central City was constructed under Highway 13.



## **Linn County Mayors' Bike Ride**

Come and celebrate the City of Cedar Rapids Bronze level designation as a Bicycle Friendly Community by the American League of Bicyclists. Tentative plans include the same route as last year with a 9:00 am start at Ellis Park. Volunteers are needed for various duties that day.

In 2010, Cedar Rapids Mayor Ron Corbett proclaimed September as "Bicycle Safety & Driver Alertness Month" in Cedar Rapids. All residents are encouraged to identify and learn the various aspects of bicycle and motor vehicle safety as it relates to sharing our public roads in an effort to make Cedar Rapids' streets some of the safest in the state. The Mayors' Ride is a great opportunity to practice safe riding and trail use.





# LCTA SUPPORTER FORM

## Why would I want to support LCTA?

1. Your support will count you among the hundreds of enthusiastic trail advocates who make up the Linn County Trails Association.
2. By becoming a supporter you will have already begun to play an important role in building a network of connected trails in Linn County and the surrounding area.
3. 95% of all money raised through donations and grants goes directly to build more trails or to improve existing trails. LCTA has been able to multiply this financial support by providing matching funds to secure significant grants.
4. As a supporter, you will receive our quarterly newsletter. Here you can read about trail vacations, upcoming trail events, opportunities to volunteer, and issues that are important to trail development.
5. Supporters are not expected to attend meetings and no one will call you. Of course, if you want to get involved, we will welcome your help.

Learn more about LCTA by visiting our website at [www.linncountytrails.org](http://www.linncountytrails.org)

### Information required: (fill out if not on label on other side)

Name(s): \_\_\_\_\_

Address: \_\_\_\_\_

City/State/Zip: \_\_\_\_\_

E-Mail: \_\_\_\_\_

Please print the information CLEARLY

### Donations to LCTA are Tax Deductible

TRAIL BLAZER	<input type="checkbox"/>	\$100*
TRAIL PARTNERS (Family)	<input type="checkbox"/>	\$ 35
TRAIL SCOUT	<input type="checkbox"/>	\$ 20

\* At the Trail Blazer level, supporters also receive the "Advocate," the newsletter of the Iowa Trails Council.

Please consider an additional donation for NEW TRAIL DEVELOPMENT \$ \_\_\_\_\_

If you provide your email address, we will send future reminders via email and will add you to the LCTA email distribution list, which is used to provide information on trail-related events to supporters.

Mail donations to:  
**Linn County Trails Association**  
PO Box 2681 Cedar Rapids, IA 52406

*Please check your mailing label for your  
Support Renewal Date.*

*If you renew without our sending you a  
reminder, it saves us time & money.*

*So PLEASE - Renew in a timely manner. All donations are  
tax deductible.*

**THANK YOU FOR YOUR SUPPORT!**

*If you are not already a supporter, please consider helping us.*

Linn County Trails Association  
P.O. Box 2681  
Cedar Rapids, IA 52406-2681

ADDRESS SERVICE REQUESTED

NON-PROFIT ORG.  
U.S. POSTAGE  
PAID  
Montezuma, Iowa  
Permit No. 30



*After a little vegetation managment, the Cedar Valley Nature Trail will open near the end of August*