



Trail Connections

The Quarterly Newsletter Published by the Linn County Trails Association

Spring 2015



Around the corner: 2015 Trail Construction

LCTA Officers

President

Paul Fiegen

Vice President

Tom Pepper

Treasurer

Keith Sutherland

Secretary

Brad Mullin

Past President

Steve Hershner

Board Members

Sarah Barber
Dean Barnum
Craig Elliot
John Ernst
Vicky Evans
Leland Frie
John Hager
Jeff Keiser
Kyle Kundberg
Rex McCright
Ron McGraw
Dick Mundy
Gary Palmer
Tom Pepper
Eric Penne
Larry Scott
Kirschen Seah
Mindy Seiffert
Mike Wilson
Dick Woodward

Advisory Board

Dan Biechler (Linn County Conservation)
Randy Burke (Linn County Conservation)
Dennis Goemaat (Linn County Conservation)
Ron Griffith (City of Cedar Rapids)
Kesha Billings (City of Marion)
Daniel Gibbins (CR Parks and Recreation)
Adam Lindenlaub (Corridor MPO)
Ed Holstrom (Trail Map Distribution)
Brandon Whyte (Multimodal
Transportation Planner)



Upcoming Events

LCTA Board Meeting
Monday, April 13, 7:00pm
Location: Shores Event Center
700 16th St NE L100

LCTA Board Meeting
Monday, May 11, 7:00pm
Location: Shores Event Center
700 16th St NE L100

LCTA Board Meeting
Monday, June 8, 7:00pm
Location: Shores Event Center
700 16th St NE L100

All meetings are open to the public.



If you plan to do any shopping on Amazon.com this year please support LCTA with Amazon Smile. It is a new program in which the Amazon Smile Foundation will donate 0.5% of the purchase price to LCTA.

To start, enter in the URL <http://smile.amazon.com> into your browser, and search for "Linn County Trails Association". By participating in this program, you can easily support LCTA while getting your online shopping done. Thanks for your continued support!

Trail Connections is the quarterly publication of the Linn County Trails Association.

*It is published January, April, July and October
Articles may be submitted as an MS Word or text file.
Typed, printed or clearly handwritten articles are also accepted. Photos can be prints or can be submitted digitally and saved with a resolution of ideally 300 dpi and a size of 6x8 inches. The deadline for each issue is the first day of the month prior to publication. Please send pictures, stories, and ideas to Brad Mullin:
mullinb1427@yahoo.com*

Current Metro Area Trails

Open For Use

Spring 2015



Separated Trails	Miles	Surface	Remarks
Bowling Street Trail	1.8	Asphalt	From 50th Street SW to Wilson Avenue
Boyson Trail	2.4	Crushed Limestone	Follows Indian Creek, Marion
Cedar River Trail	13	Asphalt	Cedar Rapids and Hiawatha (ADT)
Cedar Valley Nature Trail	20.5	Asphalt/Crushed Limestone	Paved from Boyson Rd. to Schultz Rd.
CEMAR Trail	0.6	Asphalt	From 20th to 29th St. NE
CRT Lake Loop	1.6	Asphalt	Around Cedar Lake
Ellis Trail	3.6	Asphalt/Concrete	From Edgewood Rd. NW to Downtown CR
Grant Wood Trail	8.5	Natural	Through Easter Linn County in 3 segments
Hoover Nature Trail	2.7	Asphalt	76th Ave. SW to Ely Park (ADT)
Kirkwood Connector Trail	1.2	Concrete	From Ely Rd. to Kirkwood Campus
Krumholtz Trail	.75	Crushed Limestone	Marion: Thomas Park to Highway 100
Lindale Trail	1	Asphalt	From Lindale Dr. West to C Ave.
Robins Trail	0.7	Asphalt	Along Main St, Robins. Connects to CVNT
Sac and Fox Trail	7.1	Crushed Limestone	*Closed from Rosedale Rd. to Wilder Dr.*
Park Trails	Miles	Surface	Remarks
Beverly Park Trail System	5	Natural	SW CR: Singletrack Mountain Bike trails
Cedar Greenbelt Trail	4.7	Natural	Near Indian Creek Nature Center/Sac and Fox Trail
Cherokee Park Trail	1	Crushed Limestone	West Side: Edgewood to Wiley Blvd.
Cherry Hill Park Trail	0.8	Crushed Limestone	NW Cedar Rapids: Cherry Hill Park
David Spicer Memorial Trail	0.4	Crushed Limestone	NW Cedar Rapids: Jackson Elementary School
Fay Clark Memorial Trail	0.7	Asphalt	Hiawatha: Fay Clark Memorial Park
Fross Park	1.2	Crushed Limestone	NW Center Point
Huston Park Trail	0.11	Asphalt	SE Cedar Rapids
Lowe Park Trail	0.5	Asphalt	Marion: N. 10th St to 35th Ave
Matsell Bridge Natural Area Trail System	8.4	Natural	NE Linn County, near Viola
Morgan Creek Trail System	3.8	Natural	NW Cedar Rapids
Nixon Trail	0.75	Crushed Limestone	NE Cedar Rapids: Around Nixon School
Noelridge Park Trail	0.8	Crushed Limestone	NE Cedar Rapids: Noelridge Park
Pinicon Ridge Park Trail System	12	Asphalt/Natural	Five park trails connecting to Central City
Prairie Park Fishery Trail	2	Asphalt	SE Cedar Rapids: Prairie Park Fishery
Reed Park Trail	0.25	Crushed Limestone	SW Cedar Rapids near Taylor Elementary School
Squaw Creek Park Trail System	4	Natural	Located within Squaw Creek Park plus 1 mile singletrack mountain bike trail
Thomas Park Singletrack	2	Natural	Singletrack mountain bike trail
Van Buren Park Trail	0.5	Crushed Limestone	SW Cedar Rapids near Van Buren Elementary School
Wickiup Hill Outdoor Learning Center Trail System	5	Natural	5 mile network near Toddville

LCTA President's Message

As the newly elected President of LCTA, I'd like to take a moment to introduce myself. I grew up near the Cedar Rapids metropolitan area, in a small town called Clarence. Early in my life I was introduced to the wonderful trail system here during weekend bicycle rides with my family. About two years after graduating from Iowa State University, I decided to move to Ely in order to utilize the trails on a daily basis to commute to my job downtown for Honeywell (formerly Intermed). When I graduated from school I had gained quite a bit of weight, and I knew that commuting by bicycle would help. Little did I know that it would help me lose over 80 pounds to date! I feel like a whole new person, and I have the trails system to thank.

There are many great ways and reasons to use the trails system, and I became involved with LCTA to help raise awareness for the trails system in our community, and to advocate for more trails and safe routes to move naturally for all Linn County residents.

With your help, LCTA has been able to accomplish great things. I hope to continue the important work we do as your president, and please feel free to let me know if there is anything we can do to advance our mission.

Paul Fiegen
LCTA President



**Connect to your
community on the trail**

Saturday, May 23 from 10 AM – 2 PM

National Czech & Slovak Museum & Library

\$5 adults, \$2 child, \$15 family

Note: children 12 & under must be accompanied by an adult

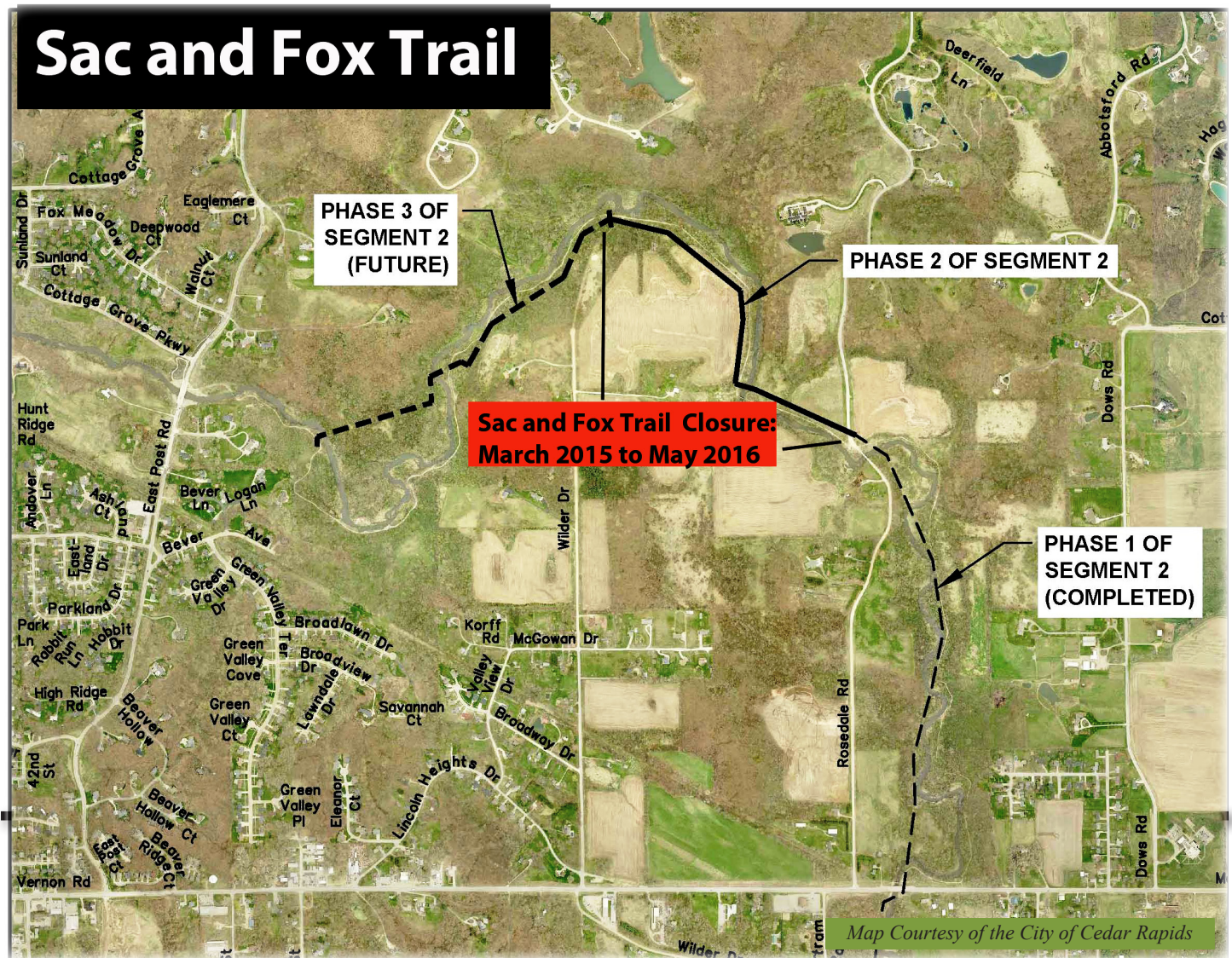
2 mile loop – Cyclists and Walkers Welcome – No Pets

Registration encouraged: 319-362-8500

www.LinnCountyTrails.org/RideWalkPlayCR/

Sponsored by





On March 23rd, 2015, the City of Cedar Rapids closed the Sac and Fox Trail from Rosedale Road to East Post Rd. The closure is in conjunction with the ongoing Indian Creek and Dry Run Creek Trunk Sanitary Sewer Project. This phase of the project will take until late fall to complete. Unfortunately, there is no detour around the construction. Preliminary discussions about relocation of flood-prone trail sections, like that during first phase, have begun. In 2014, the city completed the initial phase and elevated a short section of trail out of the Indian Creek floodplain.

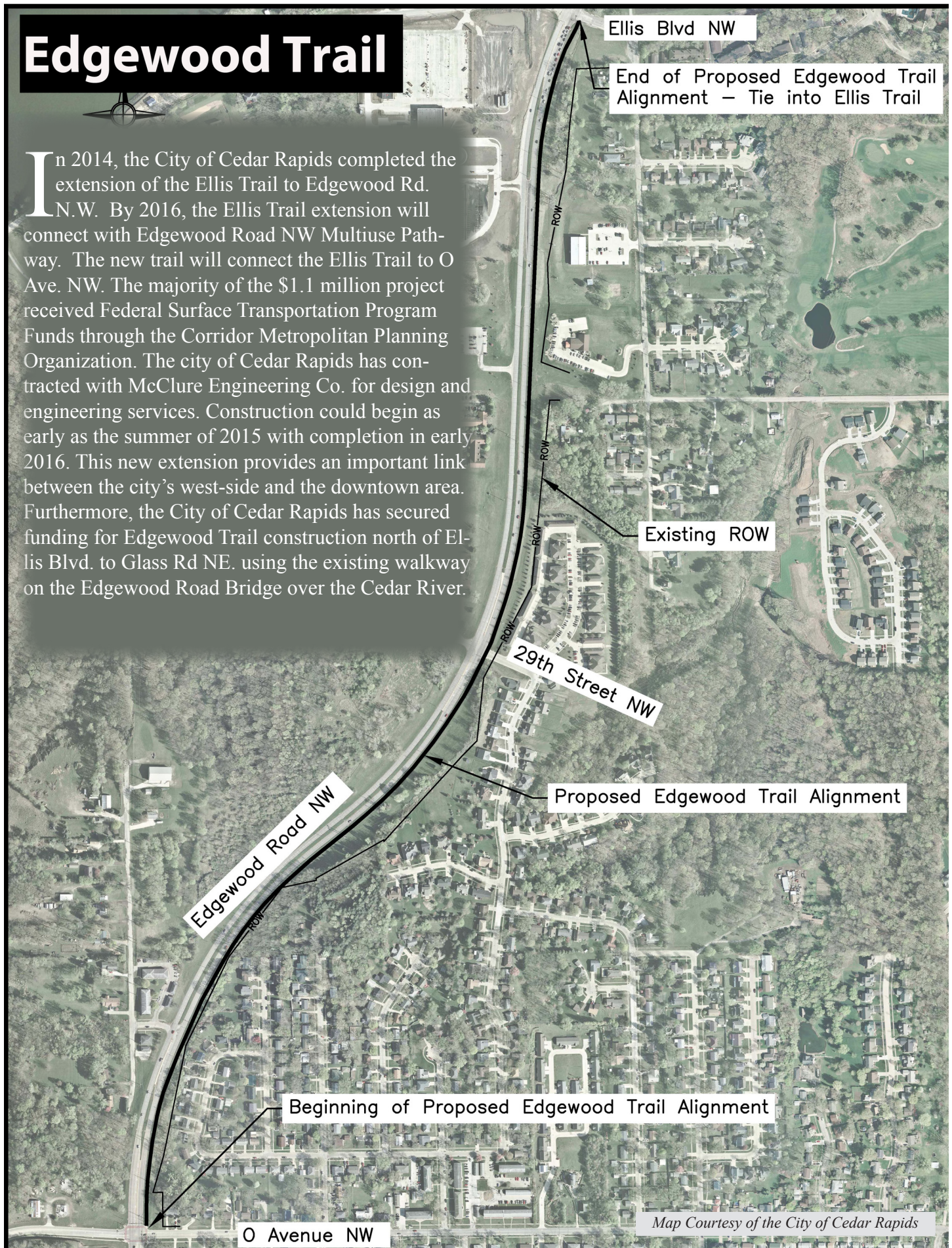
The Linn Area Mountain Bike Association (LAMBA) is working with the Cedar Rapids Parks and Recreation Department to develop sustainable natural surface singletrack mountain biking trails along the Sac and Fox Trail corridor. The new trail system will complement existing park infrastructure, blend with the existing multi use trail and provide a more intimate immersion in nature for all skill levels. The initial phase of the project will occur along the Sac and Fox Trail from the Indian Creek Nature Center to the Cole St. trailhead. Preliminary groundwork is scheduled for sometime in 2015.



to

Edgewood Trail

In 2014, the City of Cedar Rapids completed the extension of the Ellis Trail to Edgewood Rd. N.W. By 2016, the Ellis Trail extension will connect with Edgewood Road NW Multiuse Pathway. The new trail will connect the Ellis Trail to O Ave. NW. The majority of the \$1.1 million project received Federal Surface Transportation Program Funds through the Corridor Metropolitan Planning Organization. The city of Cedar Rapids has contracted with McClure Engineering Co. for design and engineering services. Construction could begin as early as the summer of 2015 with completion in early 2016. This new extension provides an important link between the city's west-side and the downtown area. Furthermore, the City of Cedar Rapids has secured funding for Edgewood Trail construction north of Ellis Blvd. to Glass Rd NE. using the existing walkway on the Edgewood Road Bridge over the Cedar River.



Map Courtesy of the City of Cedar Rapids

Edgewood Road Pedestrian Overpass and Shared Used Path.

In late 2014, Edgewood Road Pedestrian Overpass and Shared Used Path project began. The project will include a pedestrian bridge over Highway 30, an underpass structure from the westbound Highway 30 off ramp and using existing under crossing of eastbound Highway 30 on ramp. The project allows a safe means to traverse from Prairie Valley Court SW to 37th Avenue SW. The \$1.7 million project was paid for by the city and federal aid. The project received \$321,000 in Surface Transportation funding and \$834,000 in federal aid.

The new bridge and underpasses are part of a larger project. This phase will connect to future improvements, south of Highway 30 along Edgewood Rd., new facilities along 76th Ave and Wright Bros. Blvd., and existing bicycle facilities on 33rd Ave SW and the Beverly Park mountain bike trails. In 2009, the city opened Edgewood Road viaduct. The viaduct allowed for safe passage over the Union Pacific Railroad.

EXISTING SIDEWALKS (TYP.)

37TH AVE SW

38TH AVE SW

SIDEWALK / SHARED USE
PATH EXTENSION

HIGHWAY 30

PRAIRIE VALLEY CT SW

EXISTING
SIDEWALK / SHARED
USE PATH

LEGEND

- ASSESSMENT BOUNDARY
- ① ASSESSMENT NUMBER

Map Courtesy of the City of Cedar Rapids

Cedar Valley Nature Trail

With the completion of the Linn County's paving of the Cedar Valley Nature Trail in 2012, many trail users have travelled further north on the trail than before. However, their journey has ended at Schultz Rd (*right*). In 2014, Linn County applied for various grants to fund the \$1.2 million project with only 3.25 miles left to Center Point. However, the project has not been awarded any state or federal funding. The county would like to pave the trail as early as 2016. In 2015, the Linn County Trails Association will raise funds to assist in helping facilitate the project. The paving project will include re-establishing drainage, clearing and grubbing, grading, placement of rock base material, surfacing (paving) and native grass seeding and planting trees and shrubs. The new paving will extend through the city of Center Point to just past the newly re-constructed Apple Creek Bridge (2014).



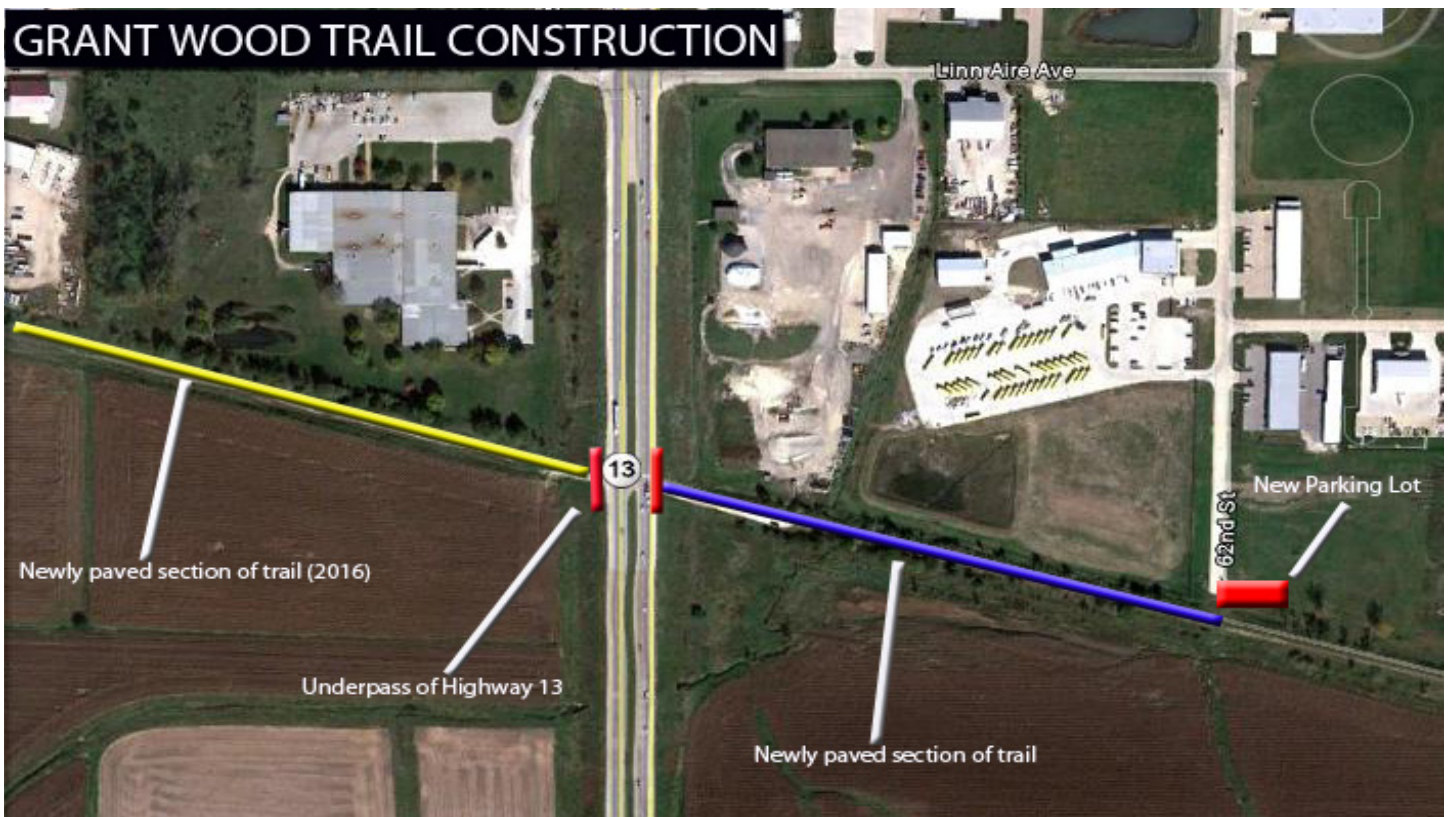
Further north, Black Hawk County Conservation will conduct repairs to the Cedar Valley Nature Trail in 2015. Repairs to sinkholes between Evansdale and the Cedar River Natural Resource area along with crack and pot-hole repairs are likely to require trail closure during the spring of 2015. In addition, funding has been secured to place new gravel on a 4.4 mile stretch of the Cedar Valley Nature Trail on either side of Brandon. In 2014, the Black Hawk County began clearing trees and low hanging branches to allow equipment for the project to access the trail. The trail will be widened back to ten feet with two foot shoulders. The re-surfacing project will lead to trail closures beginning in late spring 2015 into the summer. Along with Linn County, Black Hawk County has future plans to pave the trail in Buchanan County. Currently, just over half of the Cedar Valley Nature Trail is paved. The Cedar Valley Nature Trail is part of the American Discovery Trail (ADT) and part of the regional trail connections for Eastern Iowa.



Prairie Creek Trail and Bridge

In 2015, the city of Fairfax will open the Prairie Creek Trail connecting the east and west side of the city. The project features a new bridge over Prairie Creek. Fairfax has future plans to construct new trail and bicycle facilities through the community.





The City of Marion and the Linn County Conservation Department collaborated on the development of a trail underpass of Highway 13 to connect the Grant Wood Trail to the Marion trail system. Partial closure of Highway 13 and construction will start in the April of 2015. In conjunction with the underpass project, Linn County plans to construct a new parking lot and shelter off of 62nd Ave on the east side of Highway 13. In addition, Linn County plans to pave the Grant Wood Trail from the underpass to the new parking lot. The county obtained the land in October 2011 when the Marion Economic Development Company (MEDCO) donated 7.2 acres of land east of Highway 13. This parking area will serve as a trailhead for trail users who formerly accessed the trail from Highway 13. Linn County hopes to have the trail re-opened by July 2015.

On the west side of Highway 13, Marion is planning the construction of a paved trail from the Grant Wood Trail Underpass to 35th St. using the old railroad right-of-way (Marion Trail). A bridge over Squaw Creek is part of the new trail construction. With the acquisition of a couple of more easements, trail construction will occur in 2016. Further to the west, the city of Marion owns the old railroad right-of-way from 35th St west to 31st street and plans to construct a trail connecting the 2016 construction to the Marion Central Corridor trail. The Grant Wood Trail became part of the Linn County Conservation park system in November 2005 when it was gifted to Linn County by the Linn County Trails Association. An abandoned railroad line, this trail is approximately 10 miles long in total length and encompasses approximately 100 acres.



What about these projects in 2015?

CEMAR TRAIL

The CEMAR trail was given the highest priority among trail projects. The CMPO voted unanimously to commit \$4.5 million in federal and state transportation funds it controls to the project. These funds will be available as early as 2016. All aspects of the trail development (design/alignment studies, property acquisitions, easements, and actual construction) are funded with the money committed by the CMPO. This commitment has allowed cities to move forward on developing plans for the CEMAR Trail. There are no plans for construction in 2015.

RED CEDAR TRAIL

In 2014, Linn County Conservation received a State Recreational Trails Program grant for the development of additional singletrack mountain bike trails within Linn County's Squaw Creek Park. The Red Cedar Trail will create a family friendly singletrack loop tied directly to existing park infrastructure. The concept alignment, mirroring the Ski Lodge Road loop, balances forest and meadow sections. The new Red Cedar Loop and Connector will be approximately 8,500 feet in length. Currently, Squaw Creek Park currently hosts four miles of county-managed trails plus an additional two miles of singletrack maintained by the Linn Area Mountain Bike Association (LAMBA). Construction of the new trail could occur in 2015.

NORTHOWNE MARKET (LINDALE TRAIL)

In late 2014, many observed the removal of the railroad infrastructure between Council St. NE and Rockwell Drive NE. in Cedar Rapids. As part of the agreement regarding the abandonment of the railroad, the tracks were removed. Currently, the railroad right-of-way is owned by a private developer. The Linn County Trails Association is working on developing a trail on the abandoned right-of-way in the future. The trail would go behind the new Northtowne Market development and eventually connect the existing Lindale Trail with the Cedar River Trail.



The abandoned railway looking east from Council St.

LCTA SUPPORT FORM- WHY JOIN US?

1. Your support will count you among the hundreds of enthusiastic trail supporters and advocates who make up LCTA.
2. By joining LCTA, you will play an important role in building a network of connected trails within Linn County.
3. We are an all-volunteer organization, so most of the money we raise is used to advocate, build, or improve trails.
4. With your contribution, you'll stay even more connected by receiving our quarterly newsletter, including: upcoming events, volunteer opportunities, issues related to trail development and trail vacations.



Learn more about LCTA by visiting our website at www.linncountytrails.org

Information required *(Please print the information CLEARLY):*

Name(s) _____

Address _____

City/State/Zip _____

Email Address _____

* Your email address will not be shared, and will be used only for supporter administration. To receive updates on trail related activities and events, join the LCTA email distribution list on the LCTA website. All donations to the LCTA are tax deductible.

TRAILBLAZER ☐ \$100

TRAIL PARTNERS (FAMILY) ☐ \$35

TRAIL SCOUT ☐ \$20

Contribute online at www.linncounttrails.org

or

Mail donations to:
Linn County Trails Association
PO Box 2681
Cedar Rapids, IA 52406

*Please consider an additional donation for NEW TRAIL DEVELOPMENT of \$_____

***Please check your mailing label for your
Support Renewal Date.***

***If you renew without our sending you a
reminder, it saves us time & money.***

***So PLEASE - Renew in a timely manner. All donations are
tax deductible.***

THANK YOU FOR YOUR SUPPORT!

If you are not already a supporter, please consider helping us.

Linn County Trails Association
P.O. Box 2681
Cedar Rapids, IA 52406-2681

ADDRESS SERVICE REQUESTED

NON-PROFIT ORG.
U.S. POSTAGE
PAID
CEDAR RAPIDS, IA
PERMIT 291



In the future, trail users will go under Highway 13 into Marion.